



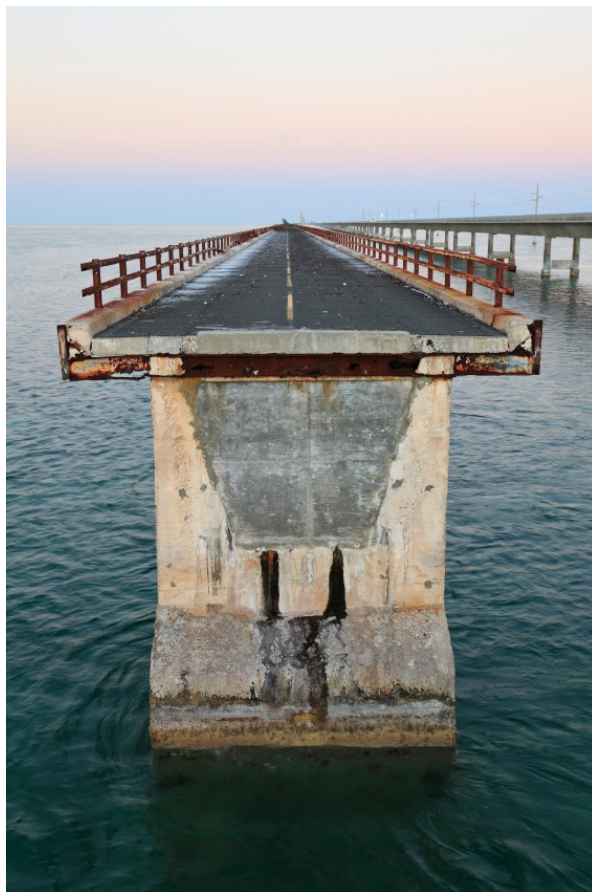
Link-Sync is a powerful and proven bridge solution that brings you:

- Employee record synchronization with HRO, Time & Labor Online (TLO), Preview or other systems.
- QuickBooks/QB Online Invoicing (A/R), GL/Job Costing, A/P, Estimates, etc. integrations.
- QB hosting-Allows your QB to be hosted on the Skibo secure web servers
- Client-server or web hosted time-entry that integrates to QB or other systems for new jobs automatically via FTP or API's.
- Piece rate calculations & automated prevailing wage rate calculations from TLO or other products such as ezLM, Enterprise eTIME, & others into Preview/PNG.
- Point of Sale (POS) & TLM pay data (time002) file creation for uploading into Paychex payroll products such as Preview or PNG. or directly into the invoicing/billing system such as QB.
- End of year W-2 file conversion & processing.
- General Ledger & job cost integrations from Paychex Payroll products listed above into many accounting systems
- Check detail history migration.
- Shop floor data & time collection
- Employee benefit statement preparation.
- Sales/Purchase Order web entry
- Reporting/custom solutions

**Link-Sync by Skibo, Corporation- Partner of:**



**Paychex One-Source Solutions**  
One Partner, One Solution



**Is the integration between your Paychex Payroll System, Accounting System, Time-System, or HR System leaving you with a bridge to no-where?**

**Let Link-Sync by Skibo Corporation bridge the gap with effortless import/export integration or automated synchronization!!!**

**Email [sales@skibocorp.com](mailto:sales@skibocorp.com) or call us today at 866-257-1011**

**Skibo personnel have been working with Paychex for over 12+ years. Skibo staff have 25+ years in the accounting & IT industry. Over that time, we have worked closely with many major accounting systems. We integrate Paychex payroll, accounting, & time-keeping systems into a seamless, efficient, & integrated solution; by erasing the barriers between disparate systems utilizing their built-in ability to import/export or utilize direct R/W access to the systems backend database for more automated integrations!**

Call us at 218-343-1864 or (888) 341-1545



**Link-Sync by Skibo integrates data from:**

**General Ledger, Job Cost, & Invoice Integrations:**

- American Contractor, Blackbaud, Intuit-QuickBooks/QuickBooks Online, Microsoft GP Dynamics, Oracle-JDE World/One World/Peoplesoft, Sage Act/100/300/500 [MasterBuilder, MIPS, Peachtree, Timberline], SAP Business Suite ERP/Business One, Explorer, Practice Master, E-Finance, & others.

**Point of Sale (POS) integration with Payroll by creating a paydata/Time002 file from the data contained in:**

- Aloha, Clubtec, Micros, Panasonic, Positouch, Pulse, Squirrel, others including Franchise systems such as Dominos Pizza, Golden Corral, KFC, McDonalds, Subway, Wendy's, & others.

**Paydata Migration converts and translates data from or to:**

- Paychex TLM (Time and Labor)
- Others such as ADP WFN/Enterprise E-time, Cebos-MQ1, Consolo, Excel sheets, Generations Homecare System, Heavy Jobs, Kronos, Paychex, ClickSoftware, etc.
- American Contractor, Blackbaud, Intuit-QuickBooks/QuickBooks Online, GreatPlains, Oracle-JDE World/One World/Peoplesoft, NDS, Sage 100/300/500 {ACT, MasterBuilder, MIPS, Peachtree, Timberline, MAS90} SAP Business Suite ERP/Business One, & others.

**Employee Master Record synchronization with uni/bi-directional feeds to/from 3rd Party HRIS, Accounting Systems, and Paychex products such as:**

- Paychex Products- Preview, TLO, HRO, etc.
- HR systems- Paychex-HRO, ADP-HRB, PeopleSoft, Oracle/JDE, SAP, others.
- Accounting Systems- American Contractor, Blackbaud, Intuit-QuickBooks/QB Online, GreatPlains, Oracle-JDE World/One World/Peoplesoft, Sage 100/300/500 [MasterBuilder, MIPS, Peachtree, Timberline], SAP Business Suite ERP/Business One, & others.
- TLM/POS Systems- Paychex TLM, ADP-WFN/Enterprise E-time, & other systems.

**Check Detail History Migrations with up to 5 years of history to ensure the Customer does not lose any prior year (s) information due to a conversion. This data can originate from just about any previous payroll provider such as ADP, Ceridian, Millennium, Intuit, Paychex, Ultimate Software, etc.**

- This allows the reports to be run from Paychex Payroll for prior years history not, previously, originating from the Paychex payroll system.
- The Customer does not need to maintain access to the old system in order to access historical information.



Founder, President & CEO of Skibo, Corporation

“Skibo, Corporation was founded on the principal of providing a consultative approach to a problem, excellent customer service, and reasonable pricing in proportion to the solution required.”

Email us at: [sales@skibocorp.com](mailto:sales@skibocorp.com)

**Skibo Link-Sync product integrates data from:**

**Prevailing Wage Rate with Invoicing or Invoice Integration:**

- Piece entry solution that allows direct entry into the system the quantity of pieces produced or routes, or similar, delivered by employees.
- Allows the importing of time worked from TLM that compares & performs a prevailing wage rate calculation between pieces produced/routes delivered times a rate/piece and hours worked \* an hourly rate.
- With the ability to pay the higher of the two.
- Automated assigning of employee pay-rates based upon employee, job, task, Customer, etc.
- Ability to directly create invoices for cross billing of Customers for employees time and materials billing.
- Ability to generate a payroll output file for uploading directly into Paychex payroll.

**QuickBooks/QuickBooks Online:**

- *GL/job costing from Paychex into QB/QBO.*
- *Time data from time systems such as Skibo's time-entry, Paychex TLM, BullHorn, TimeTracker, Office Timesheets, or ClickSoftware into QB/QBO weekly time-sheet module to allow for payroll processing inside of QB/QBO or other payroll systems or other payroll systems such as Paychex Preview/PNG with Prevailing wage rate calculations or salary distributions.*
- *Commissions calculations into the Accounts payable or cash payments module.*
- *New customers: jobs out of QB/QBO into Skibo's Time-Entry, Paychex TLM, or other systems.*
- *Invoice integrations from time systems such as Skibo's or Paychex's TLM into QB/QBO for time and materials billing.*
- 



Email us at: sales@skibocorp.com



**Time Entry Solution:**

- The ability to enter time directly into the Link-Sync web hosted or client-server solution.
- The solution can automatically extract new and/or existing customers:jobs into the time-entry system in an automated fashion. So, as new jobs are added into the QB system they will automatically appear in the Time-Entry system without user intervention. This can be automated with others systems, as well, such as GreatPlains, Oracle, JDE, etc. whereby, a file is FTP'd/sFTP'd to the Skibo secure servers that will automatically import into the Skibo web-hosted time-entry system.

Employee ID:  Status:   
 Name:   
 Dept:   
 Grp:  Exempt:   Submitted  Approved

Paycode	Jobs	Task	Equipment	Qty	Sun 8/31	Mon 9/1	Tue 9/2	Wed 9/3	Thu 9/4	Fri 9/5	Sat 9/6	Hrs Wk1	Per Diem
REGULAR	@SkiboDefault	Concrete	Vulcan 1 Air Pili		.00	8.00	.00	.00	.00	.00	.00	8.00	
OVERTIME	295 Saugatuck A	Coating	ICE Universal She		.00	2.00	.00	.00	.00	.00	.00	2.00	100.00
					.00	10.00	.00	.00	.00	.00	.00	10.00	100.00

- Will compute WorkMan's compensation with difficult calculations tied to unions that may be tied to cities/states the jobs are worked in.
- Prevailing wage rate calculations with complex calculations for automatic deductions, union dues, fringe benefits tied to specific unions based upon hours/days worked in a pay-period per job per union, etc.
- Tablets in the field can be used to directly enter data in to allow for submitting and approving time by others.
- Data from ClickSoftware or other systems can be imported into Skibo system for consolidation and/or calculations.

Refresh QuickBooks files to Link-Sync(QBFC13)

Refresh QB Tables(w SDK)  Include Customers/Jobs

Close Connection  Include Items   Service Items  
 Other Charge  
 Non Inventory

Include Accounts

Include JobTypes

Include Estimates  Last 365 Days

Include Journals

Include Vendors

Include Employees

Include Class

Exit

Email us at: [sales@skibocorp.com](mailto:sales@skibocorp.com)

ClickSoftware time collection system to many previously mentioned accounting & payroll systems:

- The ability to extract time captured data in ClickSoftware (AT&T Mobility or Verizon Field Force Manager) and import, via web services, into the Link-Sync solution, apply OT rules, allow for correcting/modifying the time in Link-sync before migrating this data into your payroll system or payroll provider. We integrate to many systems such as QB/QBO, Timberline, MasterBuilder, etc.
- The ability to push new jobs from accounting/job systems such as BullHorn, QB, QBO, MasterBuilder, Timberline, etc. to allow for these new jobs to be pushed into ClickSoftware and dispatched out to the employee's phones.



CALL US NOW at 218-343-1864 or (888) 341-1545

sales@skibocorp.com  
www.skibocorp.com

**Link-Sync integrates data from:**

**W-2 and other year end conversion and processing:**

- Solutions for one-time and/or recurring conversions of W-2 & 1099 data from one system to another.

**QuickBooks Hosting**-Allows your QB software to be hosted in the cloud. This eliminates your IT team from locally maintaining backups, upgrades, etc. The Skibo team backs up and restores your QB to our secure Remote Desktop RDP servers. This allows your team to access your QB software from anywhere on the web. We maintain your backups, upgrades, etc. This allows for other Skibo Link-Sync and QB automation such as automatic jobs and classes flowing from QB to Link-Sync and/or to/from ClickSoftware or without any user intervention.

**Custom Solutions:**

- Provides hosted Solutions, manual/automated FTP/sFTP Solutions, Benefit Statements (monthly/quarterly/yearly), & « out-of-the-box » custom Solutions.

**Customer solutions have been provided for many Customers such as:**

**American Legion**-Focusing on service to veterans, service members & communities. The American Legion currently has about 2.4 million members in 14,000 posts worldwide. [www.legion.org](http://www.legion.org)

**Industrial Window Corp.**- For over 30 years, Industrial Window Corp (IWC) has provided expert design, project management and installation of windows, doors and curtain wall to the educational, healthcare, multi-family, commercial, landmark, hotel and residential markets servicing the tristate area. [www.industrialwindow.com](http://www.industrialwindow.com)

**Mikros Systems**- Mikro is a high-technology manufacturing company located in Charlottesville, Virginia. Since opening doors in 2001, they have grown quickly, expanding both their team and customer base. [www.mikrosystems.com](http://www.mikrosystems.com)

**Customers:**



**Nominated for the North Eastern Minnesota  
Mature Entrepreneur of the year award.**

Call us today at (888) 341-1545

Email us at sales@skibocorp.com

Send us a web request at  
[www.skibocorp.com](http://www.skibocorp.com)

