



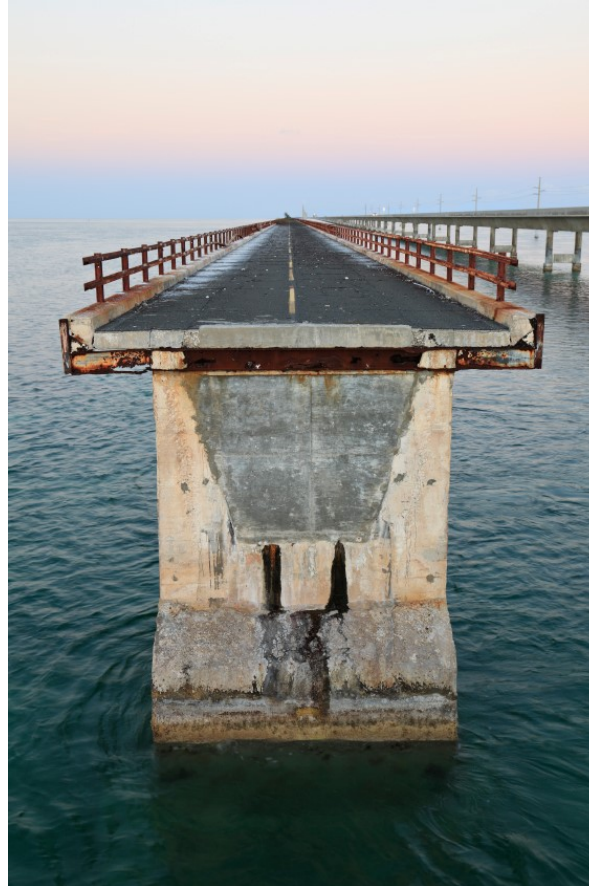
Link-Sync by Skibo, Corporation- Partner of:

Call us today at 218-343-1864
or (888) 341-1545



Link-Sync is a powerful and proven bridge solution that brings you:

- Employee record synchronization-HRIS, Time & Labor (TLM), or payroll systems via ADP Web Services.
- QuickBooks & QB Online Invoicing (A/R), GL/Job Costing, A/P, Customers:jobs, Estimates, etc. integrations.
- QB Hosting for automated jobs to time-entry systems.
- Client-server or web hosted time-entry that integrates to QB or other systems for new jobs automatically via FTP or API's
- Piece rate calculations & automated prevailing wage rate calculations from TLM products such as ezLM, Enterprise eTIME, & others.
- Point of Sale (POS) & TLM pay data (EPIP) file creation for uploading into ADP payroll products such as WFN, TotalSource, Resource, or Enterprise eTIME, or directly into the invoicing/billing system.
- End of year W-2 file conversion & processing.
- General Ledger & job cost integrations from ADP Payroll products listed above into many accounting systems
- Check detail history migration.
- Web Time-Entry
- Shop floor data & time collection
- Employee benefit statement preparation.
- Reporting/custom solutions..
- Sales/Purchase Order web entry



Is the integration between your ADP Payroll System, Accounting System, Time-System, or HR Solution leaving you with a bridge to nowhere?

Let **Link-Sync by Skibo Corporation** bridge the gap with effortless import/export or direct access integrations for automated synchronization!!!

[Email sales@skibocorp.com](mailto:sales@skibocorp.com) or www.skibocorp.com

Skibo personnel have been working with ADP Nationals, Majors, SBS, TotalSource, Resource, P2Pay, and FACS for well over 10 years. Skibo, Corp. staff have 25+ years in the accounting and IT industry. Over that time, we have worked closely with most major accounting systems. We integrate ADP payroll/accounting systems and time-keeping systems into a seamless, efficient, and integrated solution by bridging the gaps between disparate systems utilizing their built-in ability to import/export data or utilize direct read/write access to the system's backend database/API's for more automated integrations!

Call us at 218-343-1864 or (888) 341-1545

Link-Sync by Skibo, Corp. integrates data from:

General Ledger, Job Cost, & Invoice Integrations (requires ADP GLI):

- American Contractor, Intuit-QuickBooks, QuickBooks Online, GreatPlains/MS Dynamics, Blackbaud, Oracle-JDE World/One World/Peoplesoft, Sage 50/100/300 (ACT, MAS90, MIPS, MasterBuilder, Peachtree, Timberline), SAP Business Suite ERP/Business One, Explorer, Practice Master, E-Finance, & others.

QuickBooks/QuickBooks Online:

- GL/job costing from ADP Payroll into QB/QBO with a GLI output file.
- Time data from time systems such as Skibo's time-entry, ADP ezLM/Essential time, BullHorn, TimeTracker, Office Timesheets, or Xora/ClickSoftware into QuickBooks, or Quick Books Online weekly time-sheet module to allow for payroll processing inside of QuickBooks, QuickBooks Online or other payroll systems such as ADP with prevailing wage rate calculations, pay-file override (State, City, County, or School District W/H overrides) or salary allocations and/or distributions.
- Commissions calculations into the accounts payable or cash payments module.
- Payroll into the Check Register for bank checks into QuickBooks, or Quick Books Online .
- New Customers: jobs out of QuickBooks or Quick Books Online into Skibo's Time-Entry, Paychex TLO, other non-ADP systems., and into all ADP TLM systems.
- Invoice integrations from time systems such as Skibo's or Paychex's TLO, Paylocity's WebPay, other non-ADP and of course any ADP TLM system into QB/QBO for time and materials billing.

Paydata Migration converts and translates data from or to:

- ADP TLM Systems– WFN/Essential Time and Enterprise e-TIME.
- Others such as Cebos MQ1, Consolo, Excel spreadsheets, Generations Homecare Systems, Heavy Jobs, Kronos, Paychex TLO, ClickSoftware, Paychex, Paylocity WebPay, etc.
- Intuit-QuickBooks/QuickBooks Online, GreatPlains/Microsoft Dynamics, Oracle-JDE World/One World/Peoplesoft, Sage 50/100/300 (previously MAS90, MasterBuilder, MIPS, Peachtree, Timberline), SAP Business Suite ERP/Business One, Explorer, & others.



Founder, President & CEO of Skibo, Corporation

“Skibo, Corporation was founded on the principal of providing a consultative approach to a problem, excellent customer service, and reasonable pricing in proportion to the solution required.”

Email us at: sales@skibocorp.com

Piece Rate, Prevailing Wage Rate w/ Invoicing & Invoice Integration:

- *Piece entry solution that allows direct entry of the quantity of pieces produced or routes delivered by employees into the Link-Sync system .*
- *Allows the importing of time worked from time and labor then, compares & performs a prevailing wage rate calculation comparing pieces produced/routes delivered times a rate per piece and hours worked * an hourly rate. With the ability to pay the higher of the two.*
- *Automated assigning of employee pay-rates based upon employee, job, task, customer, etc.*
- *Ability to directly create invoices for cross billing of Customers for employees time and materials billing or push into systems such as QB invoice system.*
- *Ability to generate a payroll output EPIP file for uploading directly into ADP payroll.*



Check Detail History–

- *Migration with up to 5 years of history to ensure the customer does not lose any prior year (s) information due to a conversion. This data can originate from many, previous, payroll providers such as Paychex, Ceridian, Millennium, Intuit, Ultimate Software, PayCor, PayCom, Paylocity, etc.*
- *This allows the reports to be run from ADP Payroll or directly from Skibo solution for prior years history not, previously, originating from the ADP or Skibo payroll system.*
- *The customer does not need to maintain access to the old system in order to access historical information. E*

Sales/Purchase Order entry system-

- *The solution is a client-server or a web-hosted version to allow personnel to access and create sales/purchase orders from anywhere that has web access. The solution can be integrated with many systems such as to QB/QBO with customers:jobs, inventory, classes, etc. New Customers, jobs, and inventory items can be pushed or pulled from systems such as QB/QBO or integrated via file exchange import/export, or FTP automatically.*



Email us at: sales@skibocorp.com

ClickSoftware/Xora time collection system to many previously mentioned accounting or payroll systems:

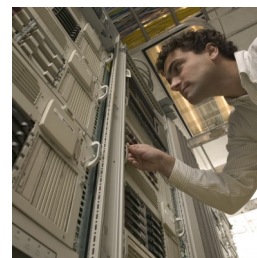
- *The ability to extract time captured data in Xora (AT&T Mobility or Verizon Field Force Manager) and import, via web services, into the Link-Sync solution, apply OT rules, allow for correcting/modifying the time in Link-sync before migrating this data into your payroll system or payroll provider. We integrate to many systems such as QuickBooks/Quick Books Online, Sage 50/100/300 (Peachtree/MasterBuilder/Timberline/MAS90, ADP, etc.*
- *The ability to push new jobs from accounting/job systems such as BullHorn, QB, QBO, Sage 50/100/300 (Peachtree/MasterBuilder/Timberline/MAS90), etc. to allow for these new jobs to be pushed into ClickSoftware and dispatched out to the employee's phones.*

Employee Master Record synchronization with uni or bi-directional feeds to or from 3rd Party HRIS, Accounting Systems, and ADP products via ADP Reporting or Web Services to such systems as:

- *ADP Products- WorkForceNow, Essential Time, Enterprise eTIME, HRB, SurePay, etc.*
- *HR systems– ADP-HRB, Paychex-HRO, PeopleSoft, Oracle/JDE, SAP, BullHorn, others.*
- *Accounting Systems- American Contractor, Blackbaud, Intuit-QuickBooks/QB Online, GreatPlains/MS Dynamics, Oracle-JDE World/One World/Peoplesoft, Sage 50/100/300 (Peachtree/MasterBuilder/Timberline/MAS90), SAP Business Suite ERP/ Business One, & others.*
- *TLM/POS Systems– ADP-WFN/Essential Time, Enterprise eTIME, & other systems.*

Point of Sale (POS) integration with Payroll by creating a pay-data/EPIP file from the data contained in:

- *Aloha, Clubtec, Micros, Panasonic, Positouch, Pulse, Squirrel, and others including franchise systems such as Domino's Pizza, Golden Corral, Jimmy John's, KFC, McDonalds, Subway, Wendy's, & others.*



 **Tabs3**



CREATIVEWORX

 **Explorer** Construction Management Software



AT&T

Office 
Timesheets



Email us at: sales@skibocorp.com



Time Entry Solution:

- The ability to enter time directly into the Link-Sync web hosted or client-server solution.
- The solution can automatically extract new and/or existing customers:jobs into the

Employee ID: Status:
 Name:
 Dept:
 Grp: Exempt: Submitted Approved

Paycode	Jobs	Task	Equipment	Qty	Sun 8/31	Mon 9/1	Tue 9/2	Wed 9/3	Thu 9/4	Fri 9/5	Sat 9/6	Hrs Wk1	Per Diem
REGULAR	@SkiboDefault	Concrete	Vulcan 1 Air Pilin		.00	8.00	.00	.00	.00	.00	.00	8.00	
OVERTIME	295 Saugatuck A	Coating	ICE Universal She		.00	2.00	.00	.00	.00	.00	.00	2.00	100.00
					.00	10.00	.00	.00	.00	.00	.00	10.00	100.00

time-entry system in an automated fashion. So, as new jobs are added into the QB system they will automatically appear in the Time-Entry system without user intervention. This can be automated with others systems, as well, such as GreatPlains/MS Dynamics, Oracle, JDE, etc. whereby, a file is FTP'd/sFTP'd to the Skibo secure-servers that will automatically import into the Skibo web-hosted time-entry system.

- Will compute WorkMan's compensation with difficult calculations tied to unions that may be tied to cities/states the jobs are worked in.
- Prevailing wage rate calculations with complex calculations for automatic deductions, union dues, fringe benefits tied to specific unions based upon hours/days worked in a pay-period per job per union, etc.
- Tablets in the field can be used to directly enter data in to allow for submitting and approving time by others.
- Data from ClickSoftware/Xora, or other systems can be imported into Skibo system for consolidation and/or calculations.

Refresh QuickBooks files to Link-Sync(QBFC13)

Refresh QB Tables(w SDK) Include Customers/Jobs

Close Connection Include Items Service Items
 Other Charge
 Non Inventory

Include Accounts

Include JobTypes

Include Estimates Last 365 Days

Include Journals

Include Vendors

Include Employees

Include Class

Exit

CALL US NOW at 218-343-1864 or (888) 341-1545

sales@skibocorp.com
www.skibocorp.com

W-2 and other year end conversion and processing:

- Solution for one-time/recurring conversions of W-2 & 1099 data from one system to another.

QuickBooks Hosting-Allows your QB software to be hosted in the cloud. This eliminates your IT team from locally maintaining backups, upgrades, etc. The Skibo team backs up and restores your QB to our secure Remote Desktop RDP servers. This allows your team to access your QB software from anywhere on the web. We maintain your backups, upgrades, etc. This allows for other Skibo Link-Sync and QB automation such as automatic jobs and classes flowing from QB to Link-Sync web time-entry and/or to/from Xora without any user intervention.

Custom Solutions:

- Provides hosted Solutions, manual/automated FTP/sFTP Solutions, Benefit Statements (monthly/quarterly/yearly), & « out-of-the-box » custom Solutions.

Skibo Corp Customers:

- **IQPipeline**-*"Their mission is to become a seamless extension of your office". They exist to serve their customers in the most complete and efficient means possible. They sincerely expect that you will experience a completely different level of service beginning the first time you contact their team. www.iqpipeline.com*
- **GraniteRock Company**- *For more than a century, Graniterock has provided the construction industry with quality materials & products: the keys to ensuring a perfect job, every time. Graniterock People say "Yes, we will" when asked to meet your special product and service needs. www.graniterock.com*
- **ZMC Hotels**- *Your investment belongs with the right hotel management company. ZMC Hotels is highly respected as one of the top hotel management companies in the nation. www.zmchotels.com*



Testimonial-*"Skibo Corp personnel are a responsive, professional partner. They can be trusted to do exactly what they commit to. It's always a pleasure to work with them."* **Pete Dignam-Vice President of Operations, ADP TotalSource**

"I've worked with Skibo Corp personnel for over 6 years now on a few different projects. He has helped me earn new business by writing everything from simple integrations to very detailed bridges. They are one of the most responsive and detail oriented partners I have ever had the pleasure of working with.

I would recommend him in any situation! **Matthew Duffy, ADP Major Accounts-District Manager**

Nominated for the Northeast Minnesota

Call us today at (888) 341-1545

Email us at sales@skibocorp.com

Send us a web request at www.skibocorp.com/contactus.htm

